

Human MICA Protein

Cat. No. MIC-HM40A



Description

Source	Recombinant Human MICA Protein is expressed from HEK293 with His tag and Avi tag at the C-Terminus. It contains Glu24-Gln308.
Accession	Q96QC4
Molecular Weight	The protein has a predicted MW of 35.8 kDa. Due to glycosylation, the protein migrates to 55-70 kDa based on Bis-Tris PAGE result.
Endotoxin	Less than 1EU per µg by the LAL method.
Purity	> 95% as determined by Bis-Tris PAGE > 95% as determined by HPLC

Formulation and Storage

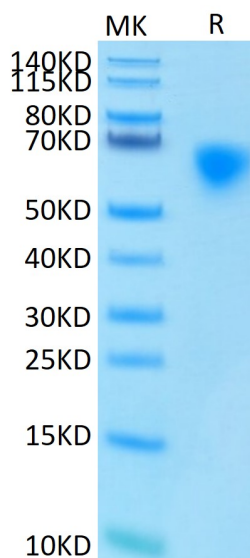
Formulation	Lyophilized from 0.22µm filtered solution in PBS (pH 7.4). Normally 8% trehalose is added as protectant before lyophilization.
Reconstitution	Centrifuge the tube before opening. Reconstituting to a concentration more than 100 µg/ml is recommended. Dissolve the lyophilized protein in distilled water.
Storage	-20 to -80°C for 12 months as supplied from date of receipt. -80°C for 3 months after reconstitution. Recommend to aliquot the protein into smaller quantities for optimal storage. Please minimize freeze-thaw cycles.

Background

MICA (MHC class I chain-related gene A) is a transmembrane glycoprotein that functions as a ligand for human NKG2D. A closely related protein, MICB, shares 85% amino acid identity with MICA. These proteins are distantly related to the MHC class I proteins. They possess three extracellular Iglike domains, but they have no capacity to bind peptide or interact with beta 2-microglobulin..

Assay Data

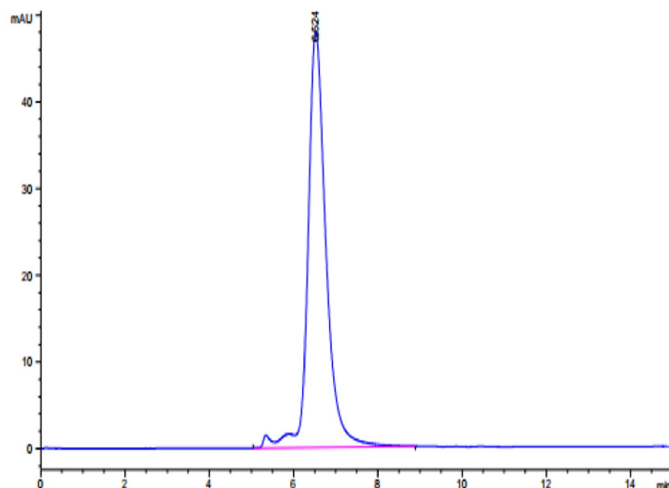
Bis-Tris PAGE



Human MICA on Bis-Tris PAGE under reduced condition. The purity is greater than 95%.

SEC-HPLC

Assay Data

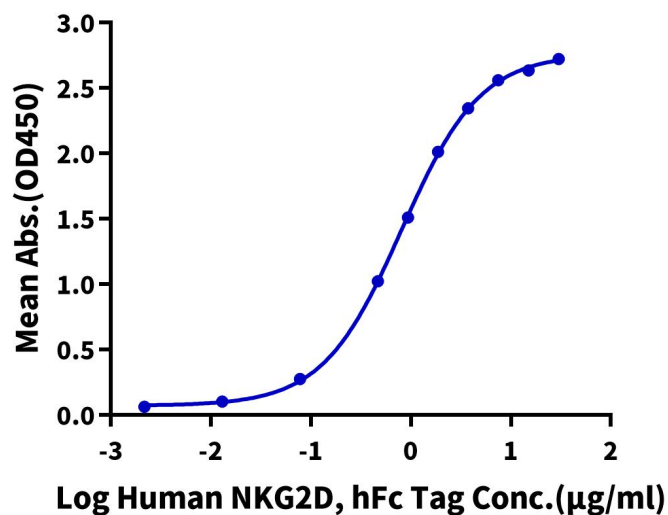


The purity of Human MICA is greater than 95% as determined by SEC-HPLC.

ELISA Data

Human MICA, His Tag ELISA

0.5µg Human MICA, His Tag Per Well



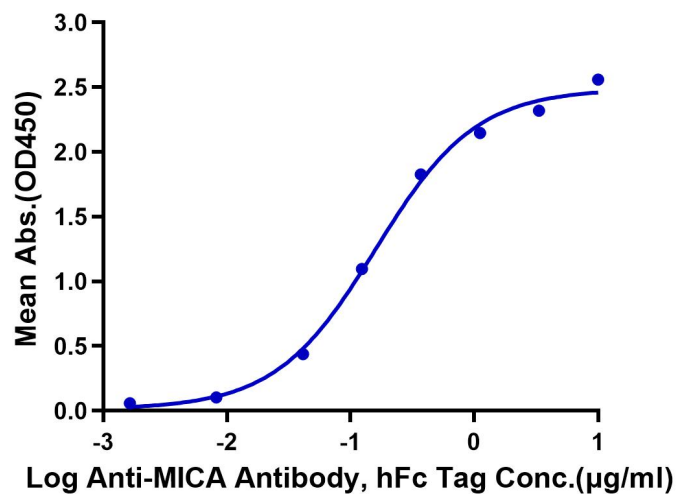
Immobilized Human MICA, His Tag at 5µg/ml (100µl/Well) on the plate. Dose response curve for Human NKG2D, hFc Tag with the EC50 of 0.81µg/ml determined by ELISA (QC Test).

ELISA Data

Assay Data

Human MICA, His Tag ELISA

0.5µg Human MICA, His Tag Per Well



Immobilized Human MICA, His Tag at 5µg/ml (100µl/well) on the plate. Dose response curve for Anti-MICA Antibody, hFc Tag with the EC50 of 0.16µg/ml determined by ELISA.